

# Copthorne

AUCKLAND CITY



Let's Meet *Together*  
2025 Conference Pack



# Welcome to Auckland

Known as 'The City of Sails', Auckland is New Zealand's largest city situated on the shore of the Hauraki Gulf stretching between the glistening waters of the Waitemata and Manukau Harbours. Dormant volcanic cones are scattered throughout the region with rainforest covering the surrounding hills. From stunning beaches and island getaways to international golf courses and award winning wineries, Auckland is a natural choice for your next conference or event. As the main gateway to New Zealand this vibrant, cross-cultural hub is easily accessible to both international and domestic visitors.

## Location

Copthorne Hotel Auckland City is conveniently located only a few minutes walk to designer boutiques, theatres and clubs in the inner city. Situated high on what was once a beachside cliff, from your private balcony the city sweeps down to the Waitemata Harbour. The hotel is within 500m of the entertainment venue Vector Arena, 1km from the bustling Viaduct Basin, and 20km from Auckland Airport. The hotel's central city location makes it easy to get to the greater Auckland areas.





# The Hotel

Copthorne Hotel Auckland City positions itself firmly as an excellent all-round venue for conference and accommodation requirements. The hotel has warm classic tones throughout and the individual room balconies offer a variety of views from cityscapes to parklands, to overlooking the Waitemata Harbour. Central location, superior facilities and friendly personalised service make this an ideal place for your next event.

## Guest Services

- Jimmy Cook's Kiwi Kitchen
- Private dining room
- Limited parking is available, on a first in first serve basis and rates are subject to change.
- Complimentary wireless internet throughout the hotel
- Guest laundry and dry-cleaning services
- Secretarial services upon request

## Affiliations



**Qualmark**  
Silver 4 Star



**Toitu Envirocare**  
Carbonreduce certified



**BEIA**  
Platinum Member



**AuSAE**  
Alliance Partnership



## Function Rooms

Whatever your requirements, from small business meetings to large conferences and banquets, you can rely on our facilities and the commitment of our professional conference team to bring it all together.

### Fergusson Room

The Fergusson Room consists of two individual rooms combined to create a floor space of 120m<sup>2</sup> and is perfect for workshops, product launches or seminars. Centrally located on the ground floor by the hotel lobby, the Fergusson Room provides both natural and adjustable lighting and is air-conditioned. This room can operate as the main plenary venue or can be split into a Fergusson A and C, with A being the main plenary 80m<sup>2</sup>, and C being a separate smaller breakout space or catering area  
Note: access to Fergusson C is via the main entrance of Fergusson A

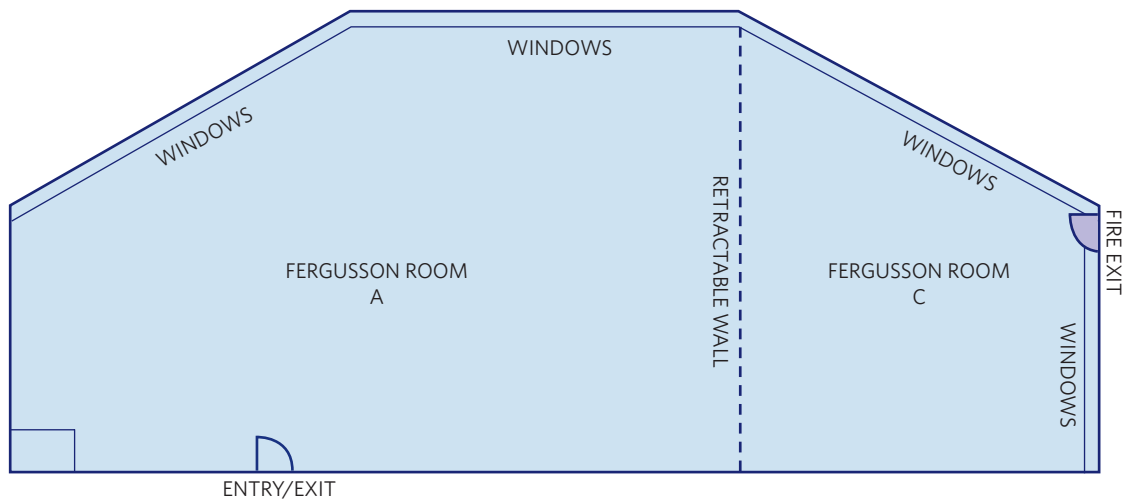
### The Alcove Room

Ideal for small meetings and as a breakout room. This room features adjustable lighting and is air-conditioned with access off the main reception.



# Capacities

Conference Room	Area Sqm	Ceiling Height								
Fergusson Room	120	2.75m	110	50	80	100	50	50	60	
Fergusson A	80	2.75m	75	30	55	60	30	30	40	
Fergusson C	40	2.75m	35	20	25	40	20	20	20	
The Alcove Room	36	2.75m	40	30	24	40	18	24	-	





# Event Essentials

## Day Delegate Packages

**Full Day Delegate Package**  
 NZ \$59.00 per person per day includes:

Plenary venue hire

Morning tea

Working lunch

Afternoon tea

Whiteboard with markers

Flipchart with markers

Notepads, pens, iced water and mints

Delegate packages are available for booking of 20 delegates or more and are inclusive of 15% GST.

## Audiovisual Equipment

Equipment	Cost per day	Equipment	Cost per day
First whiteboard	Complimentary	Projection screen	NZ \$50.00
Additional whiteboard*	NZ \$50.00	Data projector and screen	NZ \$250.00
First flipchart	Complimentary	TV	From NZ \$75.00
Additional flipchart	NZ \$25.00	Sound system with lapel or handheld microphone*	NZ \$450.00
Lectern*	NZ \$40.00		

All the above pricing is inclusive of 15% GST unless otherwise stated and are subject to change.

We work closely with a local audiovisual supplier and can arrange additional equipment based on your specific requirements

\* A delivery surcharge of \$50.00 applies.

## Internet

Complimentary wireless internet is available in the conference room.



## Food & Beverage

### Catering

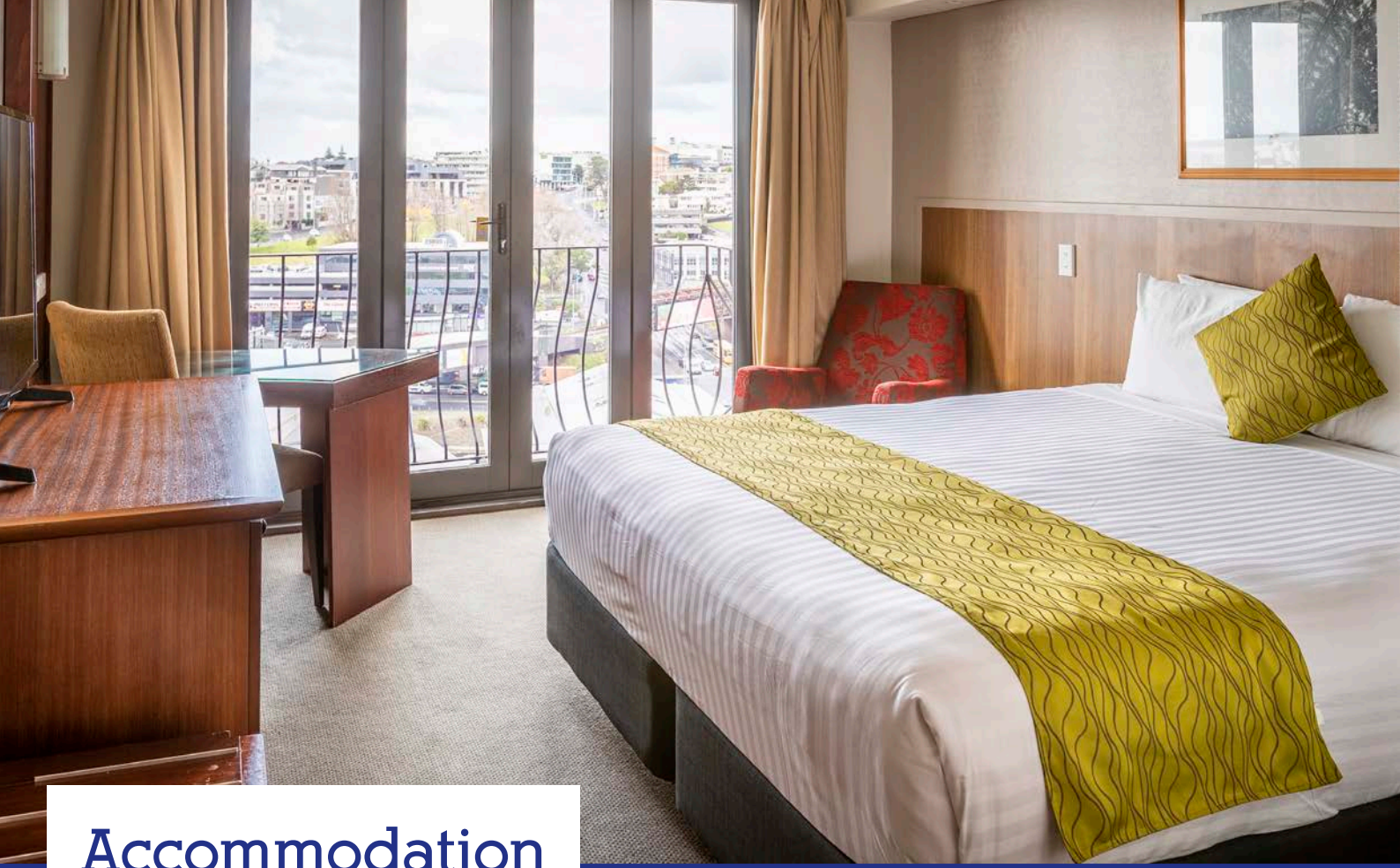
When planning your catering we offer several different solutions and can tailor menus to suit dietary requirements and your budget. Refreshments are served in the conference room, however a breakout area can be arranged if preferred. Dinner themes are a great way to make a statement or create a memorable evening and our conference team can supply detailed menus and theme ideas.

<b>Arrival tea and coffee</b>		NZ \$5.50
<b>Morning or afternoon tea</b>	From	NZ \$10.00
<b>Lunch</b>	From	NZ \$35.00
<b>Canapés</b>	From	NZ \$30.00
<b>Buffet dinners</b>	From	NZ \$75.00
<b>Plated dinners</b>	From	NZ \$57.00
<b>Beverage packages</b>	From	NZ\$30.00

All prices are per person and include 15% GST.

### Jimmy Cook's Kiwi Kitchen

Enjoy cuisine from the freshest local ingredients and a menu comprising of international flavours and traditional favourites. Jimmy Cook's Kiwi Kitchen caters for breakfast, lunch and dinner. Located adjacent to the lobby in the heart of the hotel, one of the function venues is located off the bar, providing an ideal location for small intimate dinners, workshops or a breakout room with easy access to the brasserie and bar. Jimmy Cook's provides a central point for delegates to meet in a relaxed, smart, casual environment.



## Accommodation

Copthorne Hotel Auckland City is comprised of 106 guest rooms including 93 superior rooms (2 of which are accessible rooms), 9 superior plus rooms and 4 suites. All rooms are non-smoking.

### Superior Room

Scattered throughout the entire six floors of the hotel, superior rooms offer a mixture of king, queen or twin share configurations. Ensuite bathroom facilities include either the shower over the bath or a walk-in shower only. All superior rooms feature French doors opening onto small individual balconies.

### Superior Plus Room

Situated on the fifth floor facing the Waitemata Harbour, these rooms feature a king bed, ensuite bathroom with a walk-in shower only and access to small individual balconies via French doors.

### Suite

Located on the sixth floor, these one bedroom suites offer a spacious open plan living area with French doors opening onto two small balconies. All suites feature a king bed and ensuite bathroom with a walk-in shower only.

### All Rooms Feature

Television with satellite channels, Wi-Fi internet access, clock radio, mini bar (on request), tea and coffee facilities, direct dial telephone, individual voicemail, ironing facilities and hair dryer.

Check-in: 2.00pm

Check-out: 10.00am



## Event Legacy

Do you like the idea of your event leaving a legacy? Knowing that your event can contribute to meaningful change in both the community and environment? Millennium Hotels and Resorts have partnered with Save the Kiwi, to give you the opportunity to help protect our national icon, while integrating manaaki (care and hospitality) into your next conference.

### Save the Kiwi

Every little bit counts towards creating a sustainable future and that's why we're offering a unique way for you to contribute towards providing a meal for our national icon; the kiwi.

Choosing not to have your room serviced during an event helps us to conserve water and energy resources that will be redirected towards helping provide kiwi chicks a safe place to sleep and grow until they reach the all-important 'stoat-proof' weight of 1kg.

For every five rooms that are not fully serviced, we will donate one bed for a kiwi at the Save the Kiwi crèche in Napier on behalf of your organisation.





## Activities & Attractions

Auckland is a city buzzing with new and exciting things to do and Cophorne Hotel Auckland City's great location and proximity to the motorway make it easy for delegates to mix business tourism with pleasure. From team building to partner and touring programs, we will create the ultimate experience for your group.

Discover Auckland's fantastic food and wine, world-class shopping, exciting adventure activities or get out on the harbour. A five-minute walk has you at the doorstep of designer boutiques, theatres and clubs of the inner city. The Auckland ferries are minutes away giving you access to: Waiheke Island- home to boutique wineries, artists, and sandy beaches; Devonport; Rangitoto Island; harbour cruises and more. Marvel at the spectacular 360-degree views of the sparkling harbour and surrounding landscape from the top of the Sky Tower or experience the thrill of climbing the Auckland Harbour Bridge.



# Contact Us

## **Copthorne Hotel Auckland City**

150 Anzac Avenue  
Auckland Central, New Zealand 1010

Hotel Manager: Nick Lion

Telephone: +64 9 379 8509

Email: [copthorne.aucklandcity@millenniumhotels.co.nz](mailto:copthorne.aucklandcity@millenniumhotels.co.nz)

## **Millennium Hotels and Resorts National Conference Office**

Toll Free within New Zealand: 0800 4 MEETINGS (0800 4 633 846)

Telephone: +64 3 367 3302

Email: [meetings@millenniumhotels.co.nz](mailto:meetings@millenniumhotels.co.nz)



[www.meetingsnz.co.nz](http://www.meetingsnz.co.nz)

*Our Locations*

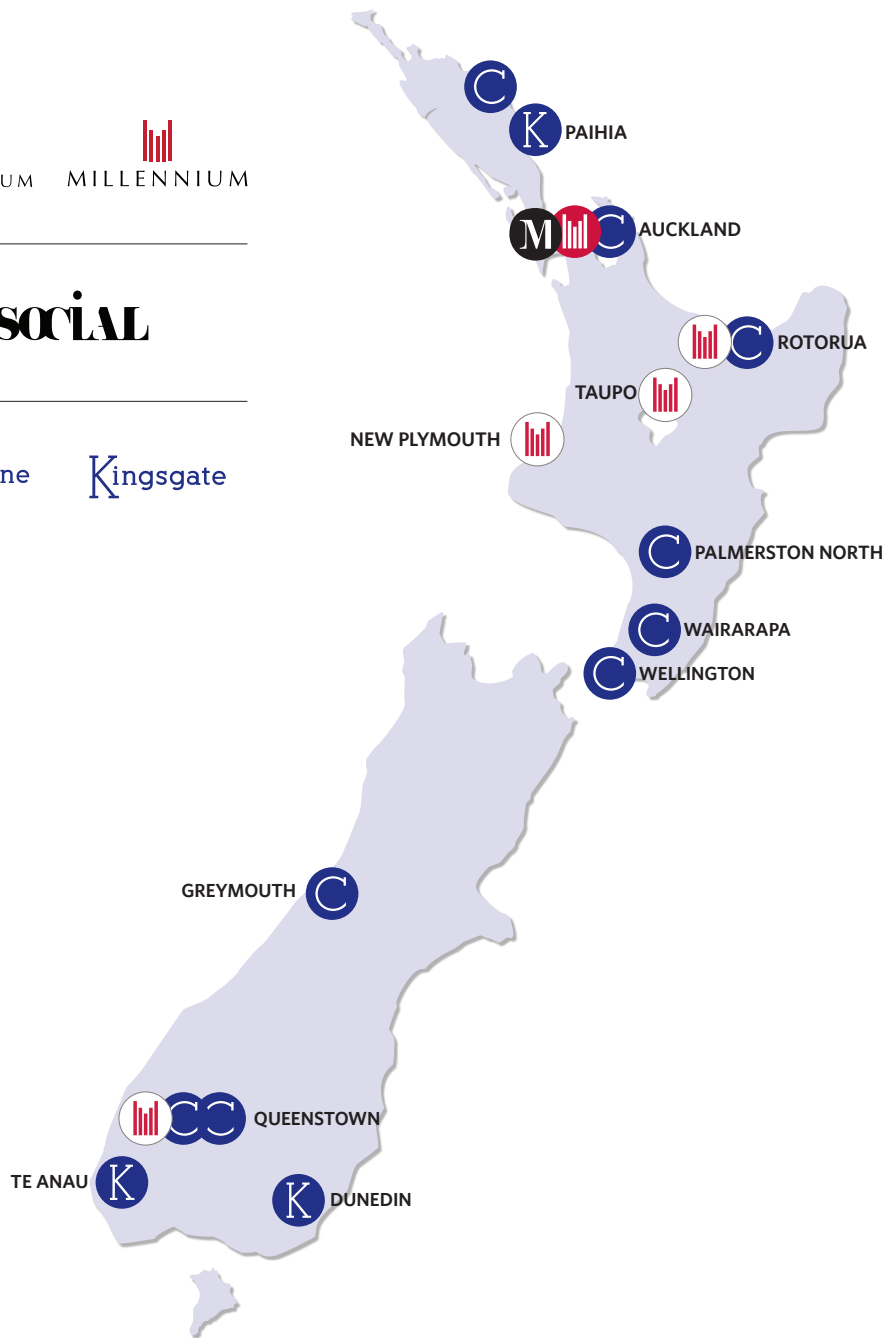
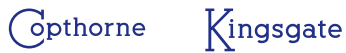
PREMIUM



LIFESTYLE



COMFORTABLE



**0800 4 633 846**

W [meetingsnz.co.nz](http://meetingsnz.co.nz) | [millenniumhotels.co.nz](http://millenniumhotels.co.nz)

New Zealand +64 3 367 3302 | E [meetings@millenniumhotels.co.nz](mailto:meetings@millenniumhotels.co.nz)