



# Copthorne Tara Hotel

# Copthorne

TARA HOTEL  
LONDON KENSINGTON

**Copthorne Tara Hotel London Kensington**  
4-18 Scarsdale Place  
Wrights Lane, Kensington  
London W8 5SR / GPS W8 5SY - GDS Chain Code: MU

**T:** +44 (0) 20 7937 7211  
**F:** +44 (0) 20 7937 7100  
**E:** [eventplanning.tara@millenniumhotels.co.uk](mailto:eventplanning.tara@millenniumhotels.co.uk)  
**W:** [www.millenniumhotels.com](http://www.millenniumhotels.com)



## Guest Rooms

833 guest rooms

Check-in: 3pm; Check-out: 12 noon

- **Standard rooms** – Feature flat screen TVs with Satellite channels, high speed internet access, tea and coffee facilities, hairdryer, iron, safe deposit box, direct dial telephone and climate control
- **Superior rooms** – Located on higher floors, elegant and spacious double or twin rooms. Family rooms are also available upon request.
- **Club rooms** – Located on top floors. Guests benefit from a spacious room and Club Lounge access for complimentary buffet breakfast and refreshments.
- **Suites** – With iconic London views, coming complete with a double bedroom, interconnecting lounge area and a second bathroom. Guests also have access to the Club Lounge.
- **Presidential Suite** – Escape the bustling city and enjoy our most spacious suite with unbeatable views across Royal Park. This room has a separate living area, perfect for those seeking a little luxury.

### Amenities & Services

- 24-hour concierge
- Multilingual staff
- Free WiFi access
- Disabled access including 10 adapted rooms
- 5 Family rooms and we can offer connecting rooms
- Room service
- Laundry and dry-cleaning services
- Fully equipped fitness room
- Extensive onsite parking outside the London congestion charge zone
- Contactless check-in service
- WhatsApp reservation service available: +44 7734494723 (Message only)



Executive Room



Standard Room

# Meetings & Functions



Skyview Suite

- Dedicated meetings and events team
- 1550m2 of multi-purpose function space
- Licensed for civil wedding ceremonies
- Two main suites can be subdivided to create smaller air-conditioned syndicate rooms
- Wi-Fi connectivity and full audio-visual support
- Dedicated reception, foyer and cloakroom
- Accessibility rooms and disabled access to meeting spaces
- Meeting space with natural daylight
- Sustainable menu options available

## Capacities & Dimensions

Suite Name	Area (m <sup>2</sup> )	Height (m)	Length x Width (m)	Theatre	U Shape	Dinner Dance	Cabaret	Boardroom	Classroom	Banquet	Reception
Skyview	443	2.60	21.3 x 20.8	400	50	280	220	60	150	300	450
Shannon Suite	410	3.25	19 x 21.6	380	90	280	220	90	180	300	400
Liffey Suite	335	3.25	15.5 x 21.6	220	70	140	112	40	120	170	250
Shannon 1, 2, 3 (One Section)	137	3.25	19 x 7.2	80	35	-	50	26	45	80	120
Liffey 1, 2, 3, 4 (One Section)	75	3.25	7.8 x 9.6	40	18	-	32	15	33	40	50
Liffey 1&2 / Liffey 3&4	150	3.25	15.5 x 9.6	100	35	-	64	26	80	80	200



Shannon Suite

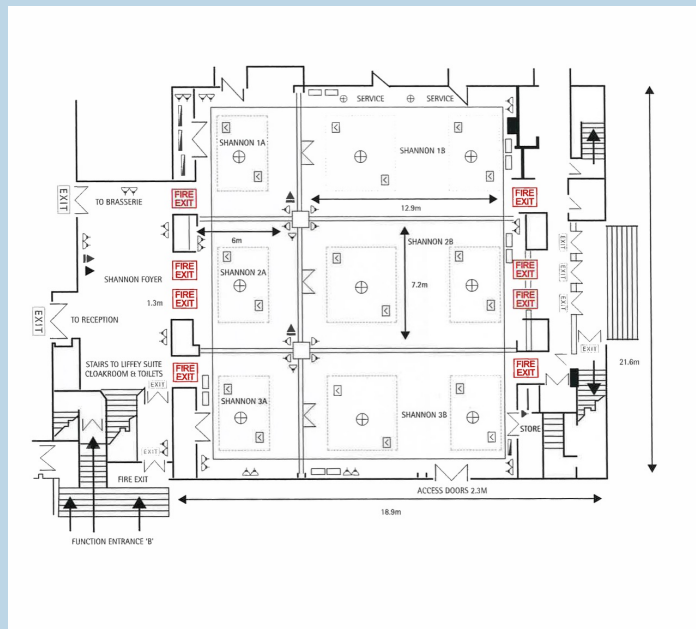


Liffey Suite

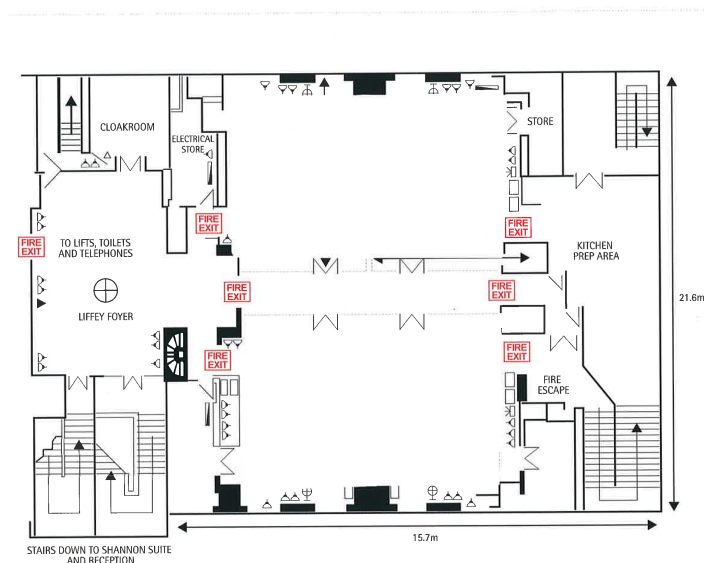
# Skyview Suite



# Shannon Suite



# Liffey Suite



# Dining



Serving an extensive buffet breakfast each morning and traditional pub fare for lunch and dinner with a great selection of beers and wines



Authentic Singaporean, Malaysian and Chinese cuisine, open daily for lunch and dinner



Freshly made sandwiches, soups, pastries and drinks to go



Bugis Kitchen

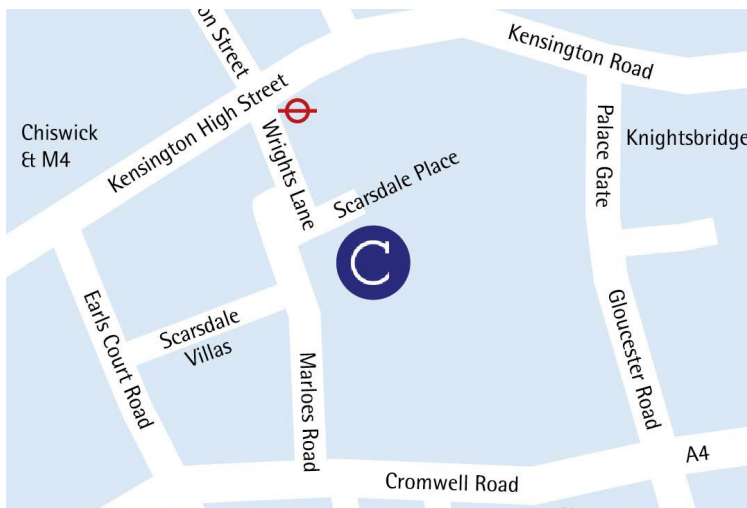
# Getting Around

## Places of Interest

- Kensington High Street
- Hyde Park
- Kensington Palace
- Royal Albert Hall
- Victoria & Albert Museum
- Holland Park
- Notting Hill and Portobello Market
- Westfield London shopping centre
- Design Museum



Hyde Park



Location Map

Travelling from:		
Heathrow Airport	By train	30 mins
	By car	30 mins
Gatwick Airport	By train	50 mins
	By car	75 mins
Stansted Airport	By train	75 mins
	By car	60 mins
Underground	High Street Kensington	3 min walk
	Gloucester Road	15 min walk