

MEETINGS & EVENTS

Where Historic Grandeur Meets Modern Luxury

CAPACITY CHART

ROOM	Space Dimensions LxWxH FEET	Square Feet	Theatre	Classroom	Reception	Conference	U-Shaped	Rounds
Roman	22' x 46' x 19'	1,128	125	55	125	38	40	80
Corinthian	22' x 46' x 19'	1,128	125	55	125	38	40	80
Grecian	20' x 22' x 11'	506	25	20	30	15	18	30
Athenian	36' x 22' x 11'	805	75	45	100	30	32	60
Moroccan	29' x 16' x 9'	480	40	24	50	24	22	30
Florentine	21' x 15' x 9'	384	30	15	20	16	18	20
Corsican	26' x 15' x 9'	448	30	20	20	18	20	20
Cordoban	26' x 27' x 10'	728	70	35	60	26	26	60
Mediterranean	35' x 17' x 11'	666	50	30	50	26	28	50
Bernard's	81' x 44' x 12'	3,564	126	75	42	38	40	190
South Galeria Heinsbergen Room	61' x 62' x 10'	4,758	200	100	300	48	50	250
Galeria Gold Ballroom	66' x 90' x 23'	5,940	300	180	350	60	64	300
Galeria Emerald Room	90' x 54' x 24'	5,454	300	170	350	76	80	250
Galeria Crystal Ballroom	90' x 70' x 29'	6,300	600	320	800	80	82	500 floor/60 balcony
Galeria Tiffany Room	75' x 48' x 17'	4,224	200	90	300	64	68	150
South Galeria Biltmore Bowl	75' x 125' x 14'	11,546	950	480	1,000	100	120	750
Millennium Boardroom	24' x 38' x 11'	2,400	60	35	85	28	34	60
Regency	136' x 120' x 9'	16,800	600	400	1,000	80 x 2	60 x 2	900

GALERIA

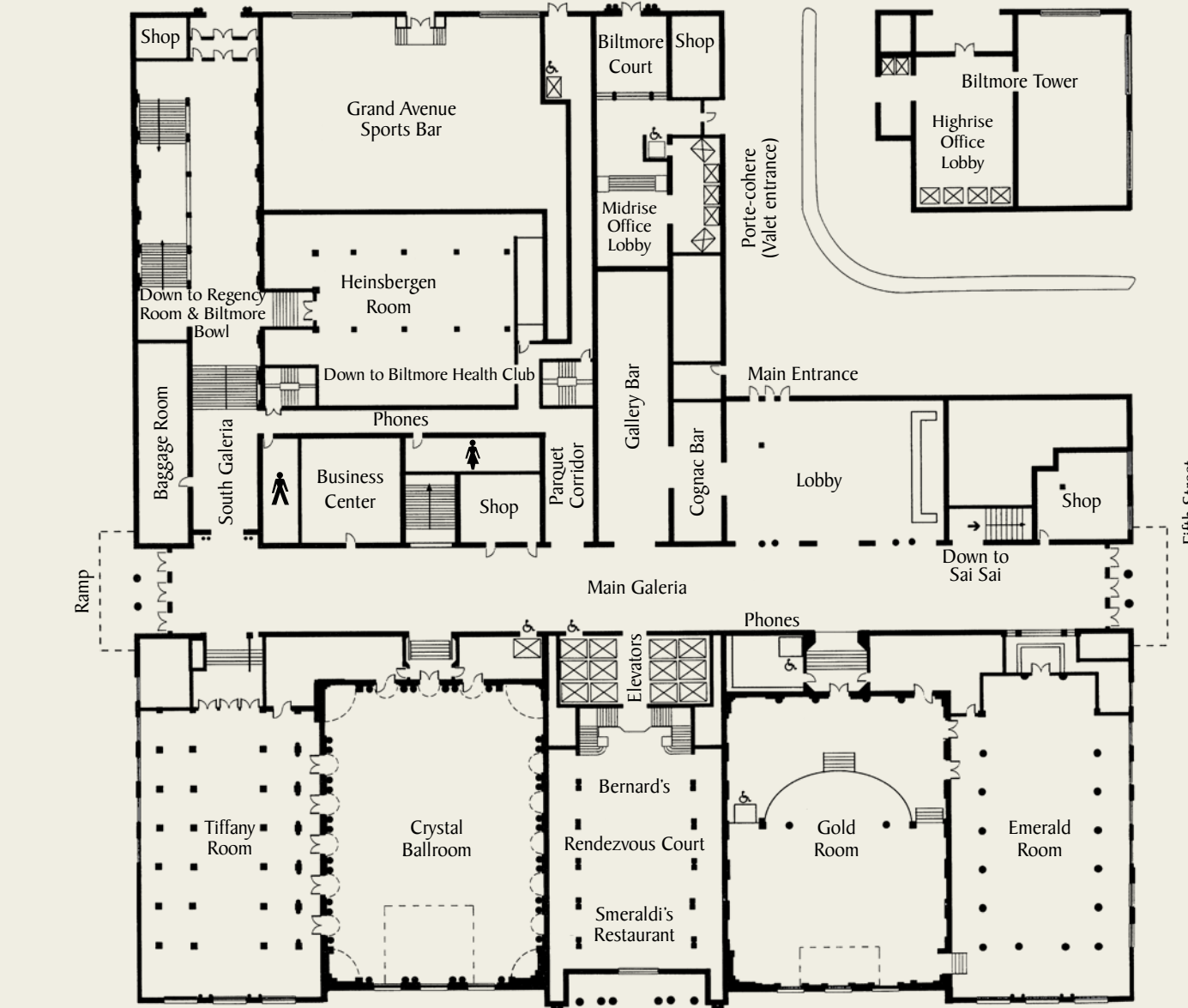
A short flight of stairs leads down from the Mezzanine Level to the Main Galeria. This promenade extends the full length of the hotel and serves as a main artery connecting the meeting and banquet space to the hotel's public areas. From there, guests can also take the twin bronze staircases down to access the exquisite Rendezvous Court.

BERNARD'S, once a five-star venue for dinner and dancing, offers a unique multi-level space and rich

wood paneling, creating the perfect atmosphere for a reception or intimate VIP event.

The HEINSBERGEN ROOM in the South Galeria is perfectly suited for twenty-two 8' x 10' exhibits as well as social functions.

The stately GOLD ROOM is built on two levels separated by a curving balustrade and tall columned arches. The lower level serves as an intimate foyer,



reception area or break area to complement the meeting, dining or dancing space of the upper tier. The room features gold coffered ceilings, wood-paneled walls and crystal chandeliers.

Hand-painted ceiling motifs of harvest and hunt reflect the origins of the EMERALD ROOM, the hotel's original dining room. Rounded faux-travertine columns and weighty bronze chandeliers create a stately and dramatic setting for conferences and banquets.

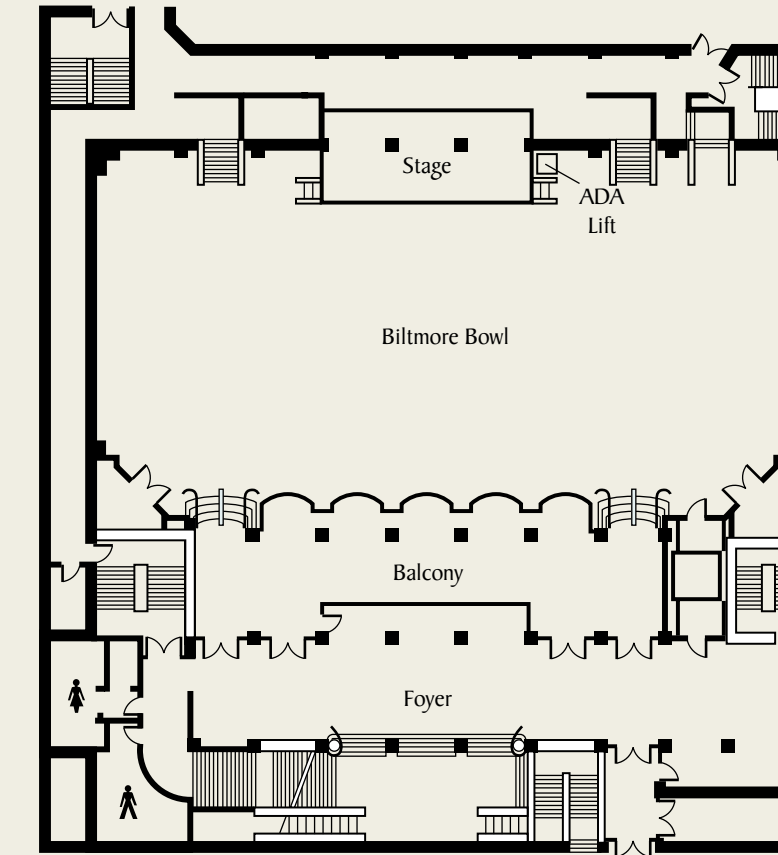
The CRYSTAL BALLROOM boasts a hand-painted, 30-foot ceiling, majestic balconies, magnificent Austrian crystal chandeliers, glittering mirrors and lush drapery. The jewel of the Biltmore, this ballroom has a rich history tied to both the hotel and old Hollywood.

An impressive yet intimate setting, the TIFFANY ROOM showcases beautiful vaulted wood ceilings and graceful colonnades. A frieze depicting Columbus and Queen Isabella lines the north wall.

BILTMORE BOWL

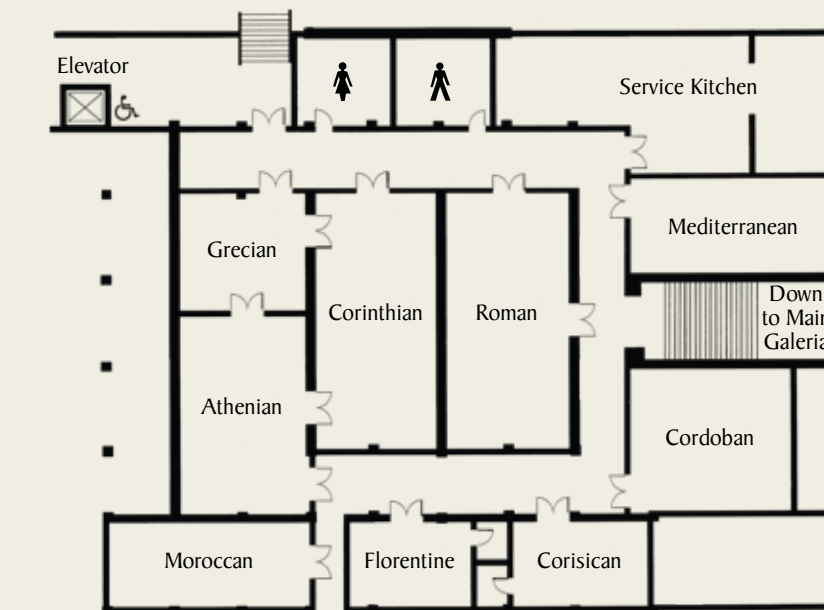
The Biltmore Bowl blends state-of-the-art audiovisual equipment with period details and the unique architectural integrity of the building. The Bowl features ample intimate pre-function space that flows into the main seating room, with an option for meeting planners to close off the seating area for privacy.

This room was designed to appeal to a wide range of groups. Enhancements such as an advanced sound system with more than 75 speakers, video and computer projection, programmable lighting controls and the ability to add theatrical lighting to the existing system through multiple hang points combine with artistic touches such as gold-leaf ceilings, wood columns, rich colors and a magnificent crystal chandelier.



CONFERENCE ROOM & MEZZANINE

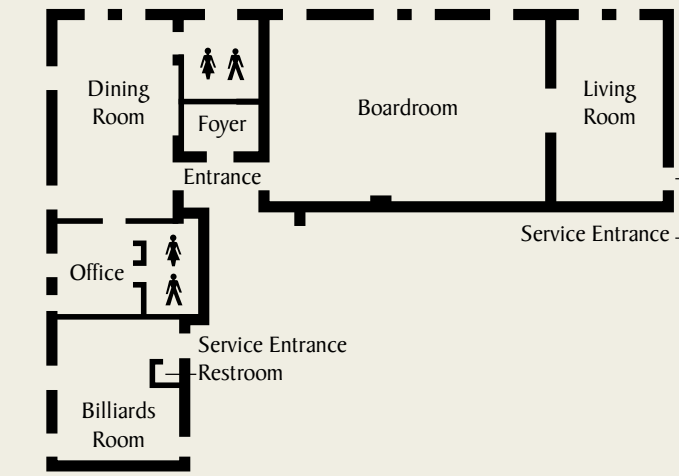
The nine unique rooms on the Mezzanine Level are perfect for small banquets, breakouts, executive meetings and symposiums. Each room is equipped for audio/visual hookup, and more than half are architecturally themed with Greco-Roman motifs, making distinctive settings for smaller functions.



MILLENNIUM BOARDROOM

The Millennium Boardroom, located on the 11th floor, is actually five unique spaces in one and is perfect for conducting important business or relaxing and dining in the utmost privacy and comfort. An impeccably furnished living room and handsome game room with an antique pool table serve to help break the ice before and after meeting time. An enormous walk-in closet stores coats and other valuables to maintain a clean space. The rich wood paneling, polished hardwood floors and lush carpet, as well as the cozy fireplace with carved mantle and plenty of seating space, complete the intimate home-away-from-home feel for any group.

The Boardroom features a fully interactive environment equipped with five separate telephone lines and high-speed Internet access. A convenient audiovisual system remotely controls a 3100 Lumens LCD Projector, VCR, CD/DVD, lights, 10' x 10' retractable screen and surround-sound system. Videoconferencing is also available.



REGENCY ROOM

Beneath the Bowl, 16,800 square feet of exhibit space with capacity for up to eighty 8' x 10' exhibits is directly accessible from the hotel's loading dock. The Regency Room is carpeted from wall to wall and brightly lit. In addition to its function as an exhibition space, the room can flexibly accommodate meetings and serve as rehearsal space for the Bowl, which is directly connected by both a staircase and large elevator.

