

MILLENNIUM
BILTMORE HOTEL

LOS ANGELES

506 South Grand Avenue, Los Angeles, CA 90071

Tel: 213.624.1011 • Fax: 213.612.1545

thebiltmore.com

Worldwide Access Code: MU



MILLENNIUM
BILTMORE HOTEL

LOS ANGELES

HISTORY

The Millennium Biltmore Hotel opened in 1923 to national acclaim as the largest hotel west of Chicago. The 11-story structure was designed by famed New York architectural firm Schultze and Weaver, known for the Waldorf Astoria and Park Lane hotels, and features Spanish-Italian Renaissance interiors, intricately detailed carvings and stunning cathedral-like ceilings hand-painted by Giovanni Smeraldi of White House and Vatican fame. In 1969, the Biltmore was designated a Historical Cultural Landmark by the City of Los Angeles.

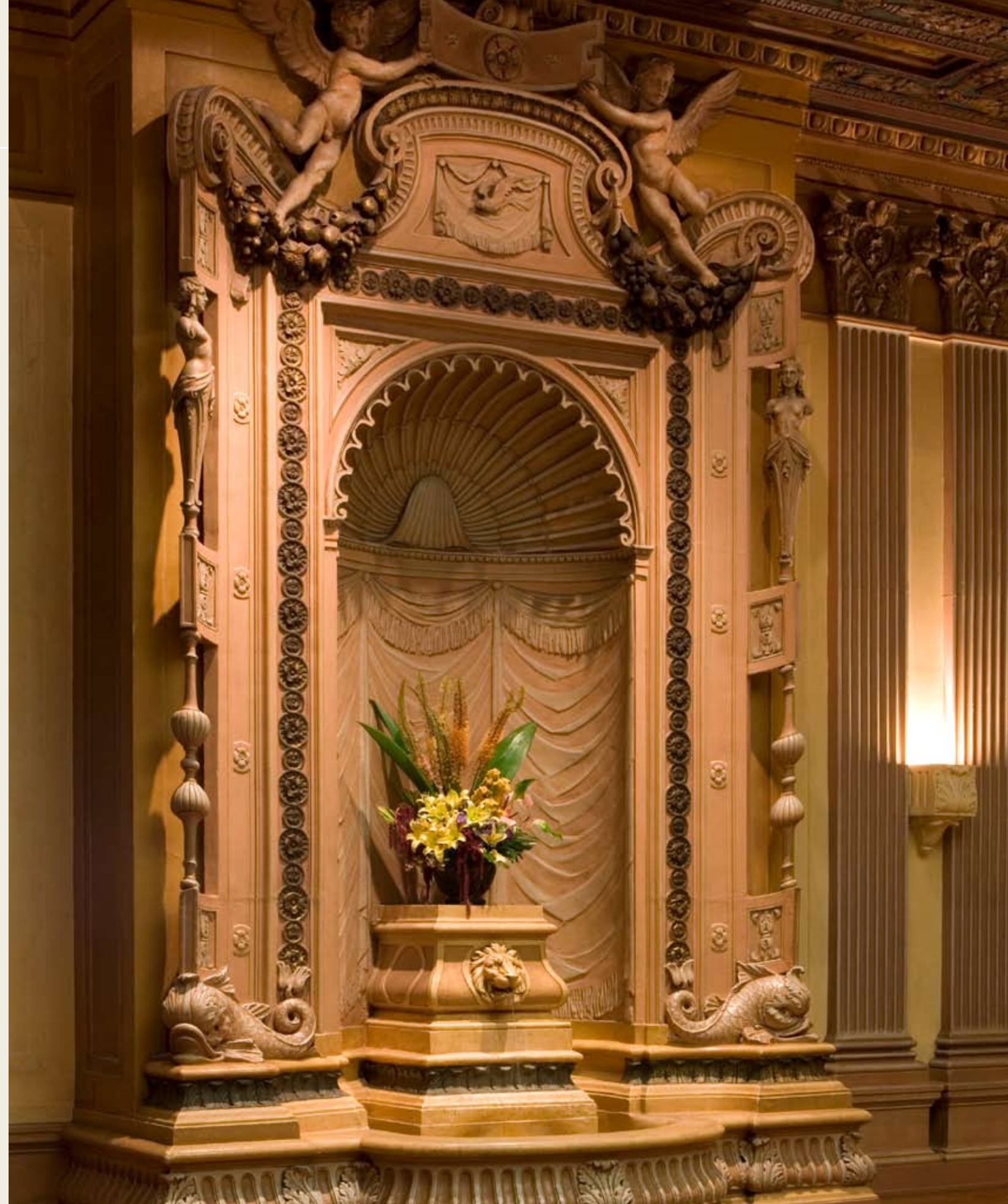
Touted as the "Host of the Coast," the Biltmore was the place to see and be seen for Los Angeles high society from the very beginning. The Academy of Motion Picture Arts and Science held its founding banquet in the Crystal Ballroom on May 11, 1927, where legend has it that the original sketch of the Oscar statuette was drawn on a Biltmore napkin. Eight Academy Awards banquets were subsequently held in the Biltmore Bowl in the 1930s, with legends like Clark Gable, Walt Disney and Ginger Rogers accepting their awards on the Biltmore stage. In 1960, John F. Kennedy established his headquarters for the Democratic National Convention in the hotel's Music Room (now the Lobby), with running mate Lyndon Johnson across the hall in the Emerald Room. In 1964, during their first world tour, the Beatles landed on the hotel roof via helicopter to escape crowds of fans on the streets below and seek refuge in the Biltmore's Presidential Suite. 20 years later, the International Olympic Committee made the hotel its headquarters during the 1984 Olympic Games held in Los Angeles. Most recently, the hotel has hosted yearly Grammy Awards after-parties and the semi-finals for American Idol.

MOVIES & TELEVISION

Countless movies, commercials, television shows and print photography have been shot at the Millennium Biltmore Hotel.

Movies include Chinatown, A Star is Born, Splash, Bachelor Party, Beverly Hills Cop, Ghostbusters, True Lies, Independence Day, Blow, Ocean's Eleven, The Nutty Professor, Buggy, The Sting, In the Line of Fire, Wedding Crashers, The Italian Job, Daredevil, National Treasure, Spider-Man and The Soloist.

Television shows include Charlie's Angels, Beverly Hills 90210, ER, NYPD Blue, The West Wing, That 70's Show, Ally McBeal, CSI: NY, Nip/Tuck, 24 and Heroes.



FOOD & BEVERAGE

SMERALDI'S RESTAURANT, open daily, is popular with both neighborhood locals and hotel guests. Breakfast specialties include an exquisite continental buffet and a chef-attended omelette station, while sumptuous lunch buffets feature an Italian flare and offer seafood stations, pasta, antipasti and desserts.

SAI SAI MODERN ASIAN CUISINE AND SUSHI BAR is known for creative, globally influenced cuisine, highlighted by fresh sushi, a wide variety of bento boxes and in-house infused shochu cocktails made with seasonal ingredients. Sai Sai offers private dining space for group lunches or birthday parties, in addition to the option of utilizing the entire restaurant for intimate gatherings such as rehearsal dinners or business receptions.

The stunning RENDEZVOUS COURT is a grand space that once served as the main lobby of the Biltmore Hotel. It's soaring ceilings, majestic architecture and flowing fountain make it the focal point of the hotel. Inside this historic lounge, guests will discover a relaxing space to meet friends, enjoy cocktails and light afternoon fare or experience an intimate evening dinner. Café Rendezvous, open daily, serves espresso and cappuccino along with homemade pastries, biscotti and sweets, as well as freshly made sandwiches, fruit, cheese plates and sushi rolls. But the Rendezvous Court is truly best-known as the spot for the Biltmore's famous Afternoon Tea, a longtime hotel tradition.

Step back in time and relive hotel history in the elegant GALLERY BAR. A homage to the Biltmore's 1920s roots, this wood-paneled, intimately lit space is a nighttime hotspot offering traditional cocktails, martinis and wines as well as a food and dessert menu. Live music Fridays and Saturdays.

POINTS OF INTEREST

- The Ahmanson Theatre
- Brookside Golf Course
- Chinatown and Little Tokyo
- Dodger Stadium
- Dorothy Chandler Pavilion
- Fashion and Jewelry Districts
- Hollywood Bowl and Walk of Fame
- Japanese American National Museum
- L.A. LIVE Entertainment District
- Los Angeles Memorial Coliseum
- Los Angeles Public Library
- Los Angeles Zoo
- Los Angeles County Museum of Art
- Museum of Contemporary Art
- Cathedral of Our Lady of the Angels
- Staples Center
- Universal Studios
- Walt Disney Concert Hall



BANQUET & MEETING FACILITIES

A perfect model of stylish 1920s elegance, the Biltmore's unparalleled architecture provides an exquisite backdrop for meetings, conferences and unforgettable social events. 70,000 square feet of flexible meeting and banquet space can be equipped with the latest communication and presentation technology, and a creative and experienced catering and convention staff is on site to ensure that each event runs smoothly and efficiently. From delectable menu selections to prompt set-ups, a perfect meeting at the Biltmore is one of the hotel's hallmarks.



FACILITIES & SERVICES

- 683 elegantly furnished guestrooms
- 48 lavish suites, from one- to three-bedrooms
- 28 executive suites
- Exclusive Club Level floor
- Executive Level floors for business travel
- Health Club and Fitness Center
- Accessible rooms
- 70,000 square feet of meeting and event space
- Beauty salon
- Retail and specialty shops on premises
- 24-hour Business Center
- Multi-lingual concierge staff
- Currency exchange
- In-room dining
- Express check-out
- Fax and photocopy services
- Wireless high-speed Internet
- In-room movies
- Laundry/valet services
- Safe deposit boxes
- Child care services
- Smoke detectors/sprinklers
- Gift shop/newsstand





MEETINGS & EVENTS

Where Historic Grandeur Meets Modern Luxury

CAPACITY CHART

ROOM	Space Dimensions LxWxH FEET	Square Feet	Theatre	Classroom	Reception	Conference	U-Shaped	Rounds
Roman	22' x 46' x 19'	1,128	125	55	125	38	40	80
Corinthian	22' x 46' x 19'	1,128	125	55	125	38	40	80
Grecian	20' x 22' x 11'	506	25	20	30	15	18	30
Athenian	36' x 22' x 11'	805	75	45	100	30	32	60
Moroccan	29' x 16' x 9'	480	40	24	50	24	22	30
Florentine	21' x 15' x 9'	384	30	15	20	16	18	20
Corsican	26' x 15' x 9'	448	30	20	20	18	20	20
Cordoban	26' x 27' x 10'	728	70	35	60	26	26	60
Mediterranean	35' x 17' x 11'	666	50	30	50	26	28	50
Bernard's	81' x 44' x 12'	3,564	126	75	42	38	40	190
South Galeria Heinsbergen Room	61' x 62' x 10'	4,758	200	100	300	48	50	250
Galeria Gold Ballroom	66' x 90' x 23'	5,940	300	180	350	60	64	300
Galeria Emerald Room	90' x 54' x 24'	5,454	300	170	350	76	80	250
Galeria Crystal Ballroom	90' x 70' x 29'	6,300	600	320	800	80	82	500 floor/60 balcony
Galeria Tiffany Room	75' x 48' x 17'	4,224	200	90	300	64	68	150
South Galeria Biltmore Bowl	75' x 125' x 14'	11,546	950	480	1,000	100	120	750
Millennium Boardroom	24' x 38' x 11'	2,400	60	35	85	28	34	60
Regency	136' x 120' x 9'	16,800	600	400	1,000	80 x 2	60 x 2	900

GALERIA

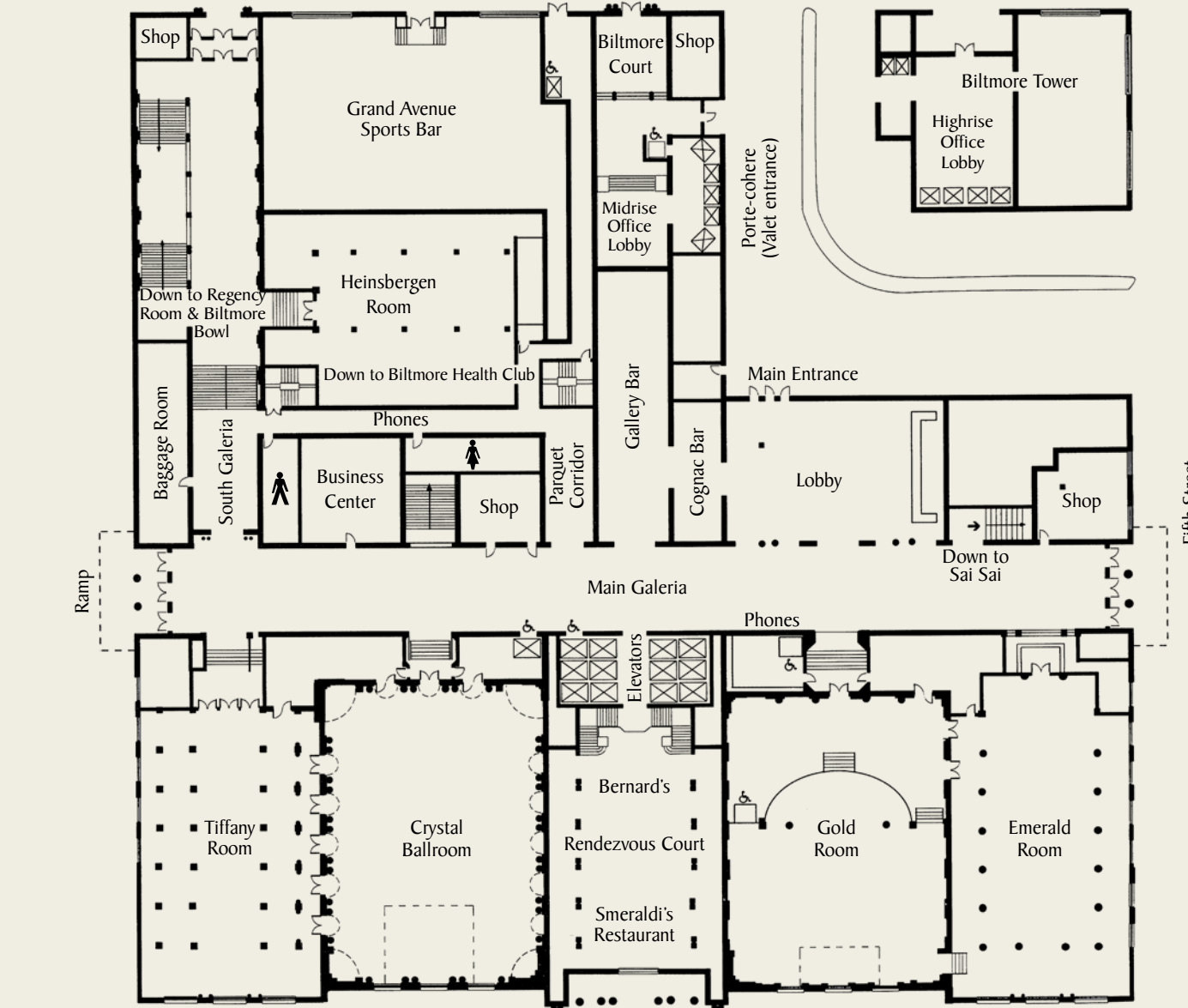
A short flight of stairs leads down from the Mezzanine Level to the Main Galeria. This promenade extends the full length of the hotel and serves as a main artery connecting the meeting and banquet space to the hotel's public areas. From there, guests can also take the twin bronze staircases down to access the exquisite Rendezvous Court.

BERNARD'S, once a five-star venue for dinner and dancing, offers a unique multi-level space and rich

wood paneling, creating the perfect atmosphere for a reception or intimate VIP event.

The HEINSBERGEN ROOM in the South Galeria is perfectly suited for twenty-two 8' x 10' exhibits as well as social functions.

The stately GOLD ROOM is built on two levels separated by a curving balustrade and tall columned arches. The lower level serves as an intimate foyer,



reception area or break area to complement the meeting, dining or dancing space of the upper tier. The room features gold coffered ceilings, wood-paneled walls and crystal chandeliers.

Hand-painted ceiling motifs of harvest and hunt reflect the origins of the EMERALD ROOM, the hotel's original dining room. Rounded faux-travertine columns and weighty bronze chandeliers create a stately and dramatic setting for conferences and banquets.

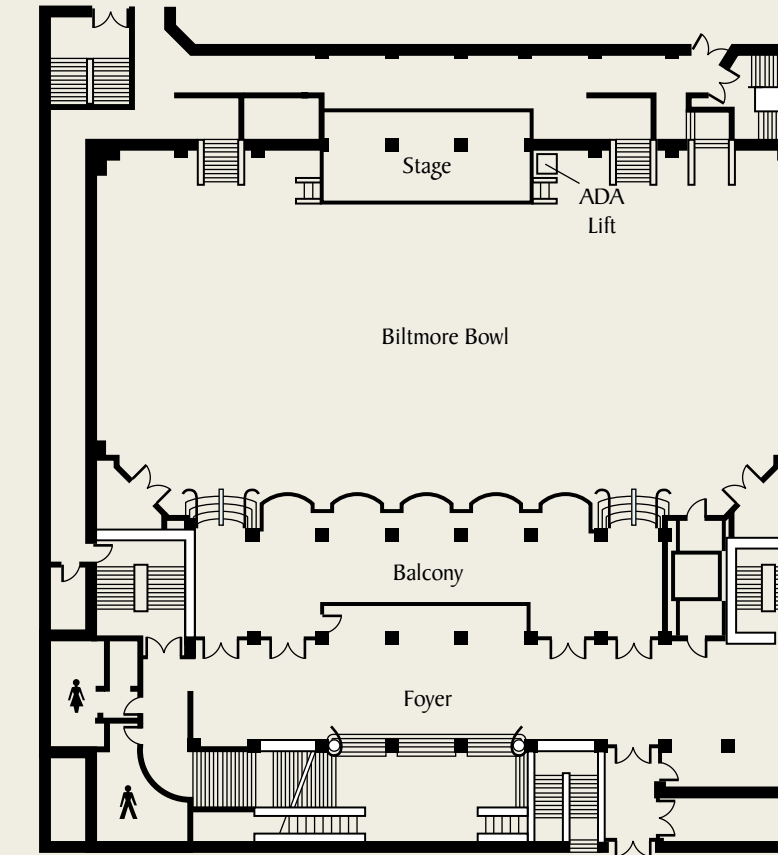
The CRYSTAL BALLROOM boasts a hand-painted, 30-foot ceiling, majestic balconies, magnificent Austrian crystal chandeliers, glittering mirrors and lush drapery. The jewel of the Biltmore, this ballroom has a rich history tied to both the hotel and old Hollywood.

An impressive yet intimate setting, the TIFFANY ROOM showcases beautiful vaulted wood ceilings and graceful colonnades. A frieze depicting Columbus and Queen Isabella lines the north wall.

BILTMORE BOWL

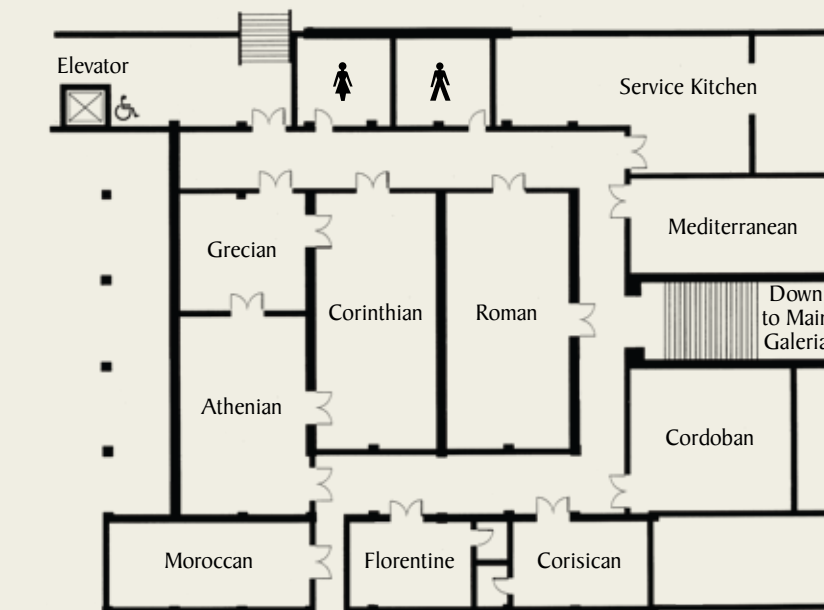
The Biltmore Bowl blends state-of-the-art audiovisual equipment with period details and the unique architectural integrity of the building. The Bowl features ample intimate pre-function space that flows into the main seating room, with an option for meeting planners to close off the seating area for privacy.

This room was designed to appeal to a wide range of groups. Enhancements such as an advanced sound system with more than 75 speakers, video and computer projection, programmable lighting controls and the ability to add theatrical lighting to the existing system through multiple hang points combine with artistic touches such as gold-leaf ceilings, wood columns, rich colors and a magnificent crystal chandelier.



CONFERENCE ROOM & MEZZANINE

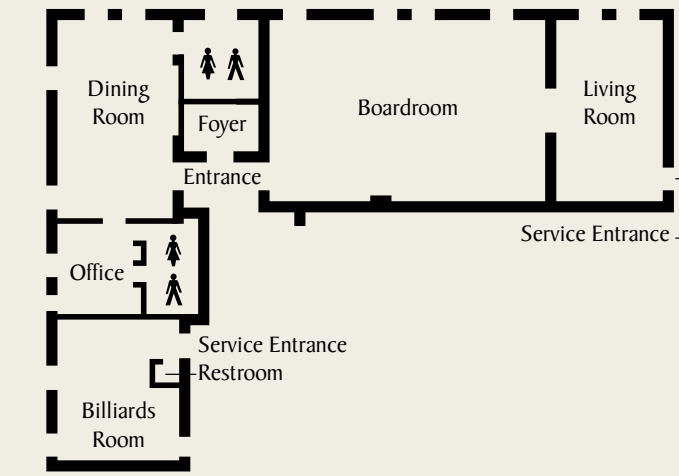
The nine unique rooms on the Mezzanine Level are perfect for small banquets, breakouts, executive meetings and symposiums. Each room is equipped for audio/visual hookup, and more than half are architecturally themed with Greco-Roman motifs, making distinctive settings for smaller functions.



MILLENNIUM BOARDROOM

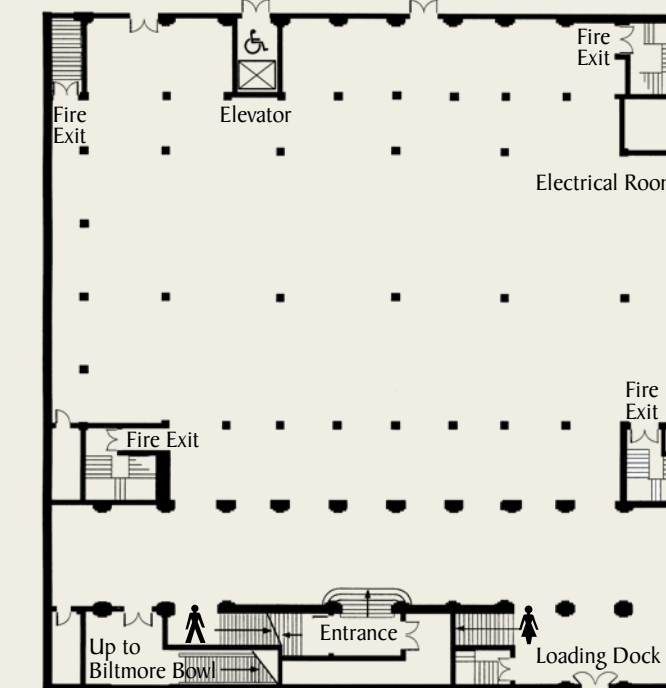
The Millennium Boardroom, located on the 11th floor, is actually five unique spaces in one and is perfect for conducting important business or relaxing and dining in the utmost privacy and comfort. An impeccably furnished living room and handsome game room with an antique pool table serve to help break the ice before and after meeting time. An enormous walk-in closet stores coats and other valuables to maintain a clean space. The rich wood paneling, polished hardwood floors and lush carpet, as well as the cozy fireplace with carved mantle and plenty of seating space, complete the intimate home-away-from-home feel for any group.

The Boardroom features a fully interactive environment equipped with five separate telephone lines and high-speed Internet access. A convenient audiovisual system remotely controls a 3100 Lumens LCD Projector, VCR, CD/DVD, lights, 10' x 10' retractable screen and surround-sound system. Videoconferencing is also available.



REGENCY ROOM

Beneath the Bowl, 16,800 square feet of exhibit space with capacity for up to eighty 8' x 10' exhibits is directly accessible from the hotel's loading dock. The Regency Room is carpeted from wall to wall and brightly lit. In addition to its function as an exhibition space, the room can flexibly accommodate meetings and serve as rehearsal space for the Bowl, which is directly connected by both a staircase and large elevator.



ACCOMMODATIONS

With its extensive list of amenities and services, the Millennium Biltmore Hotel offers guests an ideal blend of historic grandeur and modern luxury. 683 guestrooms and suites are appointed in rich color schemes with stately furnishings and ultra-comfortable down bedding, ensuring a relaxing retreat after a long day of business or travel.



Club Level

The hotel's most luxurious accommodations can be found on the top two floors, the exclusive Club Level. Guestrooms feature hand-carved mahogany furnishings along with amenities including Biltmore bathrobes, bottled water and evening turndown service. Guests can relax in the elegant Club Lounge, where they will enjoy complimentary daily breakfast, afternoon hors d'oeuvres and beverages, a private concierge and a computer station with Internet, fax and printer.

Classic Rooms

Located on floors 3-9, Classic Rooms are appointed in rich cream colors accented by crown molding, rich woods, tieback curtains and stately furnishings. Amenities include a telephone equipped with 2 lines, voicemail and data port, plus clock radios and marble bathrooms with hair dryer and bath amenities.

Executive Level

Located on floors 8-9, Executive Level rooms offer extra amenities and added comforts. Travelers will enjoy brighter lighting, spacious glass-top desks, large televisions, MP3-compatible clock radios and ergonomic leather desk chairs.

All guestrooms offer:

- High-speed Internet and WiFi
- Brand-new Dynasty Plus bedding package
- In-room dining
- Access to the 24-hour Business Center
- Coffee/coffeemaker
- Iron/ironing board



HOSPITALITY & GUEST SUITES

Presidential Suite

This two-level suite occupies space on both the 10th and 11th floors of the hotel. The expansive layout covers an astounding 4,600 square feet and includes 3 bedrooms and 5 bathrooms. The suite's public areas are located on the 11th floor, with a spacious living room, dining room, library and kitchen, and the space can easily accommodate 100 people for a private reception in high style. The décor features warm, creamy hues, stately furnishings and a grand piano, as well as decorative fireplaces in the living room and master bedroom. Guests can enjoy views of Pershing Square from east-facing windows.

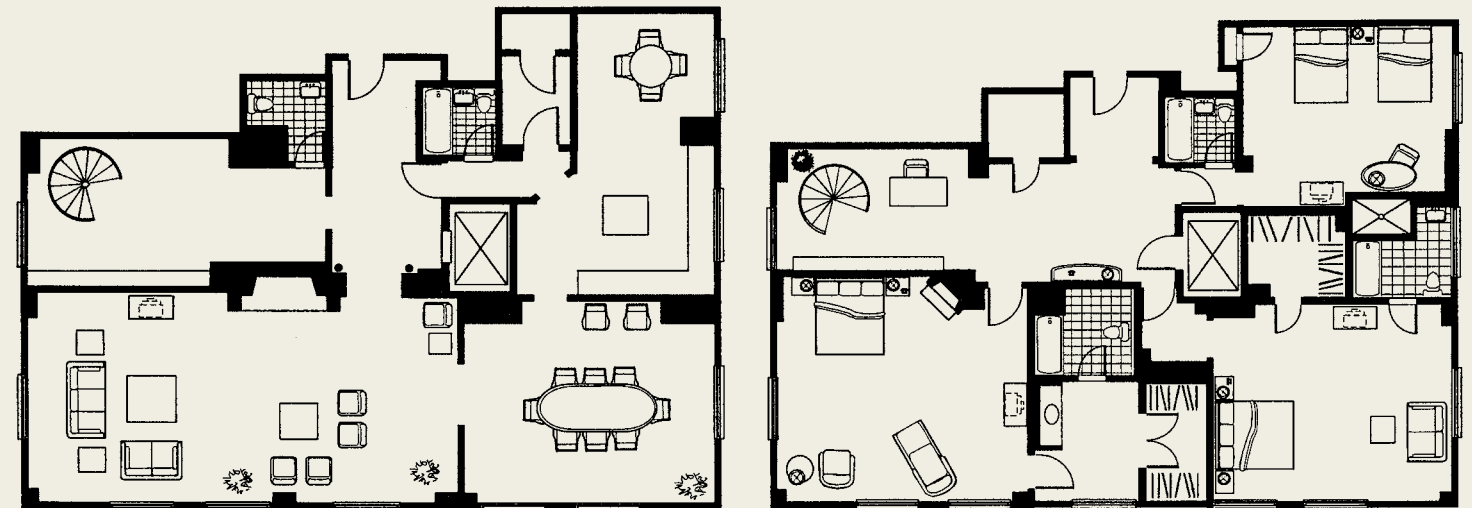
An elegant spiral staircase and antique wood-paneled elevator connect to the bedrooms on the 10th floor. The master bedroom boasts a king-sized bed, divan and spacious boudoir. The other two bedrooms provide a king-sized bed and a double-double. Gleaming marble bathrooms, vast walk-in closets and other added luxuries make the Presidential Suite the choice of royalty, celebrities and top executives alike.



Executive Suites

Featuring an intimate setting and luxurious details, each of the Executive Suites offers a master bedroom and separate sitting area. Some of the 28 Executive Suites are furnished with bright marble guest baths in the adjoining parlor.

PRESIDENTIAL SUITE



EXECUTIVE SUITE





HOSPITALITY & GUEST SUITES

Music Suite

World-renowned musicians, composers and conductors have sought out this quiet haven when staying in Los Angeles. The spacious 2,000-square-foot, two-bedroom, two-bathroom suite boasts expansive views of Pershing Square from an elegant living area adorned with a beautiful grand piano, antique music stand and decorative fireplace. The dining room, which can easily double as an executive boardroom, comfortably seats up to 10 people. Additionally, the living room, dining room and foyer combine to accommodate up to 75 guests for receptions and parties, serviced by an adjoining butler's pantry.

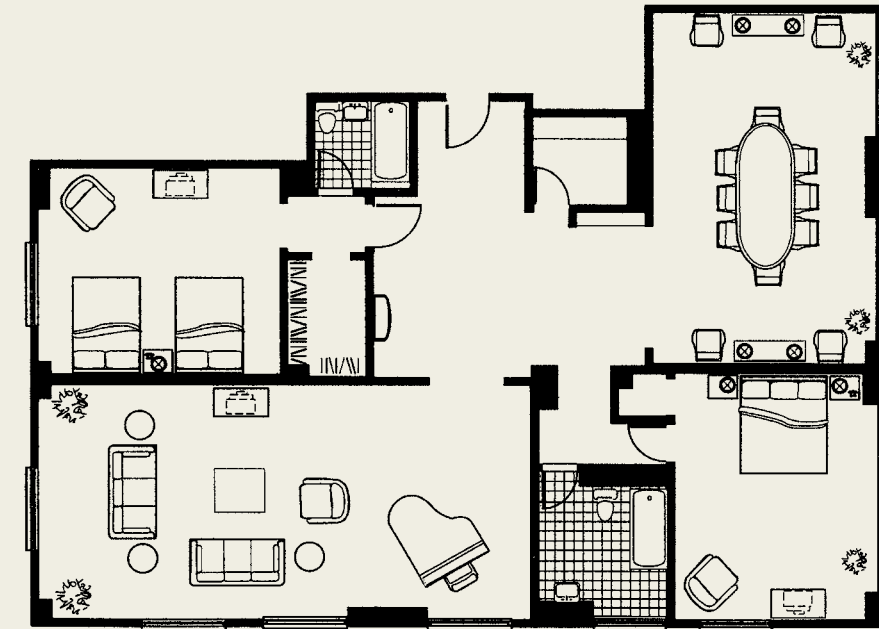


One-Bedroom Suites

Among the Biltmore's 48 one- to three-bedroom suites is a wide range of distinct configurations and amenities from which to choose. Many are appointed with a conference table with seating for six to eight, while all feature a formal dining table and decorative fireplace.

These suites, including the notable one-bedroom Baldwin, Becker and Biltmore Suites, are popular with celebrities and guests looking for a quiet getaway or an ideal retreat to entertain clients and friends.

MUSIC SUITE



ONE-BEDROOM SUITES

